

and early the next morning the siege-train followed.¹

FIROZ SHAH SHAHZADA AT MUNDISORE (MANDSORE)

Letter from Ramchunder Rao Martund (Ram Chandra Rao Martand), Offg. Minister, Holkar's Darbar, to Colonel H. M. Durand, Offg. Agent Governor General for Central India, Camp Mhow, dated Palace Indore, 30th August 1857.

I have the honor to forward to you herewith translation of a Marhatti news report from Mundisore² dated 26th instant for your information. You will perceive from it that the Insurrection, raised by the person calling himself a "Shahazada", had already acquired a formidable appearance, and is likely to lead to extensive disasters in Malwa if not crushed at once. The Jaorah³ and Rutlam⁴ rebels will no doubt flock to the

and the Agra-Bombay high road near Gujri. (*Western States Gazetteer (Malwa)*, Volume V, Text, Dhar State, Pp. 494-5).

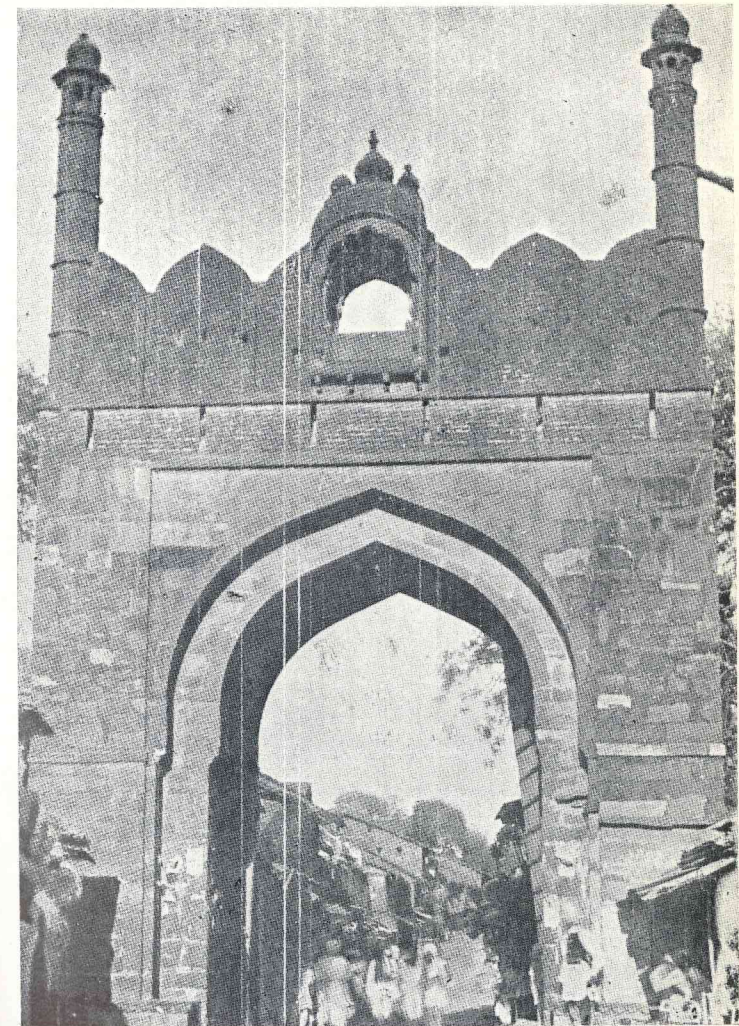
¹ George W. Forrest: "*The Indian Mutiny*", 1857-58, Volume IV, 'Introduction', Pp. 69-70.

² *Mandasor Town (Gwalior State)*—Headquarters of the pargana and zila of the same name, situated 1,516 feet above sea-level, in 24° 5' N. and 75° 5' E., on the bank of the Siwana (Seuna or Sau) river, a tributary of the Sipra, and on the Ajmer-Khandwa branch of the Rajputana-Malwa Railway.

In the Mutiny of 1857 one Sahibzada (Shahzada) Firoz Shah, a member of the Delhi house, raised his standard here and collected a considerable following, among whom were a large number of Rohillas. As their presence endangered the safety of Nimach, the Mhow Column made a rapid advance on the fort, which was captured on November 21, 1857. A fierce fight took place three days later at the village of Guraria, five miles north-west of Mandasor, in which the Rohillas fought with the greatest determination, but their defeat broke up the forces of Firoz Shah, and completely cleared this part of the country. (*Gwalior State Gazetteer*, Vol. I, 1908, Pp. 265-6).

³ *Jaora*—The State of *Jaora* was situated in the section of *Central India* known as *Malwa* and was one of the three Treaty States in the Agency of the same name. The territories of the State were much split up, the main block consisting of the tahsils of Jaora, Barauda, Tal, Barkhera, and Nawabganj, the remaining tahsils of Malhargarh and Sanjit being separated from the main block. The main block was situated between 23° 30' and 23° 55' N. and 74° 52' and 75° 32' E.; and the portion comprising the tahsils of Sanjit and Malhargarh, between 24° 5' and 24° 20' N. and 75° 0' and 75° 28' E. The area of the State is 568 square miles. (*Western States Gazetteer (Malwa)*, Volume V—Part A, Text, Jaora State, p. 181).

⁴ *Ratlam* was the chief Rajput State in the *Malwa* Political Charge of



City Gate at the Mandasor Fort
(*Gwalior Gazetteer*)