

SCIENCE AND ART DEPARTMENT  
OF THE COMMITTEE OF COUNCIL ON EDUCATION,  
SOUTH KENSINGTON MUSEUM.

---

ILLUSTRATIONS  
OF  
THE TEXTILE MANUFACTURES  
OF INDIA.



LONDON: 1881.



**TURBANS.**

2. PRINCIPAL END OF PIECE.

Length, 2 Yds. 32 Ins.; Width, 15 Ins.; Weight, 14 oz. 3 dr.

**BENARES.**

3. PRINCIPAL END OF PIECE. - - - 3a. OPPOSITE END OF PIECE.

Length, 13 Yds. 30 Ins.; Width, 13 Ins.; Weight, 8 oz. 13 dr.

**HYDERABAD, SIND.**

4. PRINCIPAL END OF PIECE.

Length, 2 Yds. 28 Ins.; Width, 15 Ins.; Weight, 13 oz. 13 dr.

**BENARES.**



### TURBANS.

#### PRINCIPAL END OF PIECE.

Length,	... ..	1 Yd. 13½ Ins.
Width,	... ..	1 Yd. 12 Ins.
Weight,	... ..	2 oz. 5 gr.

**BHURTPORE.**

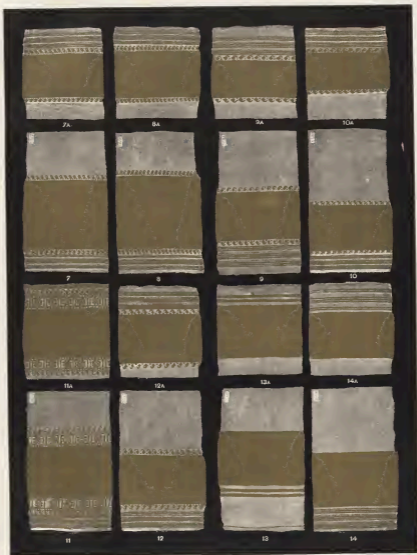
NO. 5, SECOND SERIES.

#### PRINCIPAL END OF PIECE.

Length,	... ..	1 Yd. 24½ Ins.
Width,	... ..	1 Yd. 22 Ins.
Weight,	... ..	9 oz. 2 gr.
Price,	... ..	£3 10s.

**BENARES.**

NO. 6, SECOND SERIES.



### TURBANS.

7. PRINCIPAL END OF PIECE. - 7A. OPPOSITE END OF PIECE, FROM CHANDARI.  
Length, 29 Yds 10 Ins.; Width, 111 Ins.; Weight, 7 oz. 14 dr. Price, \$21 15. 2d.
8. PRINCIPAL END OF PIECE. - 8A. OPPOSITE END OF PIECE, FROM CHANDARI.  
Length, 29 Yds 22 Ins.; Width, 113 Ins.; Weight, 8 oz. Price, \$21 15. 2d.
9. PRINCIPAL END OF PIECE. - 9A. OPPOSITE END OF PIECE, FROM CHANDARI.  
Length, 30 Yds 31 Ins.; Width, 10 Ins.; Weight, 7 oz. 1 dr. Price, \$21 35. 0d.
10. PRINCIPAL END OF PIECE. - 10A. OPPOSITE END OF PIECE, FROM CHANDARI.  
Length, 28 Yds 12 Ins.; Width, 81 Ins.; Weight, 5 oz. 8 dr. Price, 165. 0d.
11. PRINCIPAL END OF PIECE. - 11A. OPPOSITE END OF PIECE, FROM CHANDARI.  
Length, 30 Yds 22 Ins.; Width, 102 Ins.; Weight, 7 oz. Price, \$21 35. 3d.
12. PRINCIPAL END OF PIECE. - 12A. OPPOSITE END OF PIECE, FROM CHANDARI.  
Length, 23 Yds 54 Ins.; Width, 125 Ins.; Weight, 12 oz. 3 dr. Price, \$21 105. 6d.
13. PRINCIPAL END OF PIECE. - 13A. OPPOSITE END OF PIECE, FROM OMRAI, CENTRAL INDIA.  
Length, 6 Yds 102 Ins.; Width, 121 Ins.; Weight, 2 oz. 15 dr. Price, 195. 3d.
14. PRINCIPAL END OF PIECE. - 14A. OPPOSITE END OF PIECE, FROM CHANDARI.  
Length, 29 Yds 303 Ins.; Width, 12 Ins.; Weight, 8 oz. 4 dr. Price, \$21 15. 5d.



## TURBANS.

15. PRINCIPAL END OF PIECE. - 15a. OPPOSITE END OF PIECE. FROM CHUNDEREE.  
Length, 28 Yds. 133 Ins.; Width, 3 Ins.; Weight, 4 oz. 2 dr. Price, 15s.
16. PRINCIPAL END OF PIECE. - 16a. OPPOSITE END OF PIECE. FROM HYDERABAD, DECCAN.  
Length, 23 Yds. 31 Ins.; Width, 11½ Ins.; Weight, 6 oz. 23 dr. Price, 16s.
17. PRINCIPAL END OF PIECE. - 17a. OPPOSITE END OF PIECE. FROM CHUNDEREE.  
Length, 39 Yds. 19 Ins.; Width, 13½ Ins.; Weight, 9 oz. 9 dr. Price, 21 9s. 8d.
18. PRINCIPAL END OF PIECE. - 18a. OPPOSITE END OF PIECE. FROM DELHI.  
Length, 23 Yds. 31 Ins.; Width, 12 Ins.; Weight, 5 oz. 4 dr. Price, 18s. 6d.
19. PRINCIPAL END OF PIECE. - 19a. OPPOSITE END OF PIECE. FROM NANDAIR, HYDERABAD.  
Length, 27 Yds. 20 Ins.; Width, 14½ Ins.; Weight, 13 oz. 24 dr. Price, 26 3s.
20. PRINCIPAL END OF PIECE. - 20a. OPPOSITE END OF PIECE. FROM CHUNDEREE.  
Length, 23 Yds. 21 Ins.; Width, 8½ Ins.; Weight, 4 oz. 11 dr. Price, 15s.
21. PRINCIPAL END OF PIECE. - 21a. OPPOSITE END OF PIECE. FROM BHURTPORE.  
Length, 22 Yds. 28½ Ins.; Width, 11½ Ins.; Weight, 13 oz. 4 dr.
22. PRINCIPAL END OF PIECE. - 22a. OPPOSITE END OF PIECE. FROM DELHI.  
Length, 17 Yds. 22 Ins.; Width, 8 Ins.; Weight, 2 oz. 14 dr. Price, 12s.
23. PRINCIPAL END OF PIECE. - 23a. OPPOSITE END OF PIECE. FROM NANDAIR, HYDERABAD.  
Length, 23 Yds. 12½ Ins.; Width, 10 Ins.; Weight, 3 oz. 13 dr. Price, 21 10s.



**TURBANS.**

- |  |                             |
|--|-----------------------------|
| 24. PRINCIPAL END OF PIECE. - - -                            | 24A. OPPOSITE END OF PIECE. |
| Length, 16 Yds 35 Ins.; Width, 8 Ins.; Weight, 2 oz. 13 dr.  |                             |
| 25. PRINCIPAL END OF PIECE. - - -                            | 25A. OPPOSITE END OF PIECE. |
| Length, 13 Yds 32 Ins.; Width, 9 Ins.; Weight, 3 oz. 7 dr.   |                             |
| 26. PRINCIPAL END OF PIECE. - - -                            | 26A. OPPOSITE END OF PIECE. |
| Length, 16 Yds 21 Ins.; Width, 8½ Ins.; Weight, 2 oz. 11 dr. |                             |

**JEYPORE.**

- |  |                             |
|--|-----------------------------|
| 27. PRINCIPAL END OF PIECE. - - -                          | 27A. OPPOSITE END OF PIECE. |
| Length, 17 Yds 1 In.; Width, 9½ Ins.; Weight, 3 oz. 13 dr. |                             |

**DELHI.**



TURBANS.

28. PRINCIPAL END OF PIECE. - - - 28a. OPPOSITE END OF PIECE.  
 Length, 17 Yds. 30 Ins.; Width, 7½ Ins., Weight, 2 oz. 11 dr.

29 TO 36. PATTERNS OF CENTRES OF TURBAN PIECES WITH ENDS, SIMILAR TO NOS. 28 & 36.

36. PRINCIPAL END OF PIECE. - - - 36a. OPPOSITE END OF PIECE.  
 Length, 14 Yds. 30 Ins.; Width, 7½ Ins., Weight, 2 oz. 5 dr.

JEYPORE.



TURBANS.

PRINCIPAL END OF PIECE.

Length, . . . . .	14 Yds. 15½ In.
Width, . . . . .	7½ In.
Weight, . . . . .	3 oz. 2 dr.

JEYPORE.

NO 40, SECOND SERIES.

PRINCIPAL END OF PIECE.

Length, . . . . .	3 Yds. 10½ In.
Width, . . . . .	3 Yds. 11½ In.
Weight, . . . . .	1 lb. 11 oz. 6 dr.
Price, . . . . .	£6 10s.

COIMBATORE.

NO 41, SECOND SERIES.



48.

PLATE 20. 2. 12. 1890.

W. W. W. W. W.

LOOM EMBROIDERED TURBAN-PIECE.

HYDERABAD - DECCAN

Length, 2 Yds. 26 Ins.; Width, 2 Yds. 22 Ins.; Weight, 1 lb.

NO. 48, SECOND SERIES.



TURBAN.

PRINCIPAL END OF PIECE.

Length, 3 Yds 22 Ins.; Width, 26½ Ins.; Weight, 7 oz. 5 dr.

BURANPOOR, DECCAN.

NO. 52, SECOND SERIES



### TURBANS.

PRINCIPAL END OF PIECE.

Length, . . . . . 2 Yds. 20½ Ins.  
 Width, . . . . . 13 Ins.  
 Weight, . . . . . 4 oz. 5 dr.

**BOORHANPORE.**

NO. 56, SECOND SERIES

NO. 57. PRINCIPAL END OF PIECE.

NO. 57A. OPPOSITE END OF PIECE.

Length, . . . . . 24 Yds. 18 Ins.  
 Width, . . . . . 9½ Ins.  
 Weight, . . . . . 10 oz. 3 dr.  
 Price, . . . . . £24

**RQHTUCK, PUNJAB.**

NO. 57, SECOND SERIES

PRINCIPAL END OF PIECE.

Length, . . . . . 2 Yds. 21 Ins.  
 Width, . . . . . 13 Ins.  
 Weight, . . . . . 4 oz. 7 dr.

**BOORHANPORE.**

NO. 58, SECOND SERIES



**TURBAN.**

PRINCIPAL END OF PIECE.

Length, 40 Yds. 15 Ins.; Width, 19½ Ins.; Weight, 3 lb. 5 oz. 1 dr. Price, £3s.

**NOWANUGGUR, KATTYWAR.**

NO. 59, SECOND SERIES



TURBAN.

PRINCIPAL END OF PIECE.

Length, 1 Yd. 2 1/2 Ins.; Width, 1 Yd. 20 Ins.; Weight, 14 oz. 7 dr. Price, £10.

MORVEE, KATTYWAR.

NO. 60, BROAD STREET.



65.

TURBAN.

PRINCIPAL END OF PIECE.

Length, 1 Yd. 29 Ins.; Width, 1 Yd. 25 Ins.; Weight, 12 oz. 13 gr.

AHMEDABAD.

NO 61, SECOND SERIES.



62.



63.



64.



62.



63.



64.

### TURBANS.

No. 62, PRINCIPAL END OF PIECE.  
 No. 62a, OPPOSITE END OF PIECE.  
 Length, ... .. 31 Yds. 11 Ins.  
 Width, ... .. 18½ Ins.  
 Weight, ... .. 1 lb. 2 oz. 15 gr.  
 Price, ... .. £1.

**AHMEDABAD.**  
 NO. 62, SECOND SERIES

No. 63, PRINCIPAL END OF PIECE.  
 No. 63a, OPPOSITE END OF PIECE.  
 Length, ... .. 25 Yds. 4 Ins.  
 Width, ... .. 16 Ins.  
 Weight, ... .. 11 oz.  
 Price, ... .. £1.

**AHMEDABAD, BOMBAY.**  
 NO. 63, SECOND SERIES

No. 64, PRINCIPAL END OF PIECE.  
 No. 64a, OPPOSITE END OF PIECE.  
 Length, ... .. 54 Yds. 31 Ins.  
 Width, ... .. 20 Ins.  
 Weight, ... .. 5 lb. 3 oz.  
 Price, ... .. £4 16s.

**AHMEDNUGGUR.**  
 NO. 64, SECOND SERIES



MAN'S GARMENT.

Length, 3 Yds 8½ Ins., Width, 30 Ins., Weight, 7 oz. 1 lb.

RAJAHAMUNDRY.

NO 65, SECOND SERIES.

' 8321'



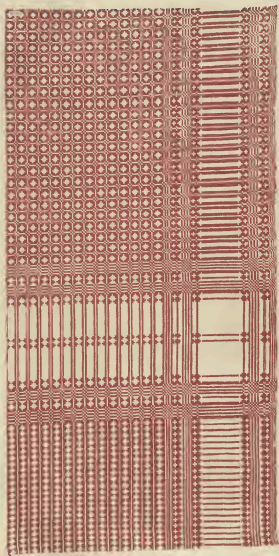
MAN'S GARMENT.

Length, 3 Yds. 23½ Ins.; Width, 1 Yd. 25 Ins.; Weight, 1 lb. 2 oz. 14 dr.

AURUNGABAD, DECCAN.

NO. 66, SECOND SERIES.

'8608'



MAN'S GARMENT.

Length, 2 Yds. 3½ Ins.; Width, 59 Ins.; Weight, 15 oz. ¼ lb.

HYDERABAD, DECCAN.

NO. 67, SECOND SERIES.

'819'



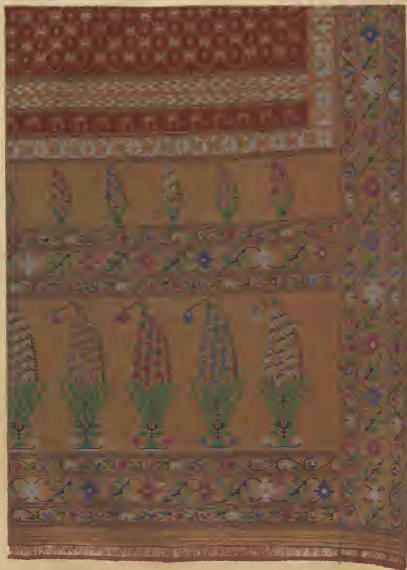
MAN'S GARMENT.

Length, 3 Yds. 17 Ins., Width, 1 Yd. 17 Ins.; Weight, 4 lb. 1 oz. 4 dr.

BOORHANPORE.

NO. 87A, SECOND SERIES.

3541



MAN'S GARMENT.

Length, 3 Yds. 25½ Ins., Width, 1 Yd. 26½ Ins.; Weight, 1 lb. 14 oz. 5 gr.

BOORHANPORE.

NO. 679, SECOND SERIES.

" 6849 "



MAN'S GARMENT.

Length, 2 Yds. 29 Ins., Width, 1 Yd. 11 Ins., Weight, 2 lbs. 5 dr.

NUGGUR, KATTYWAR.

NO 65, SECOND SERIES

"1898"



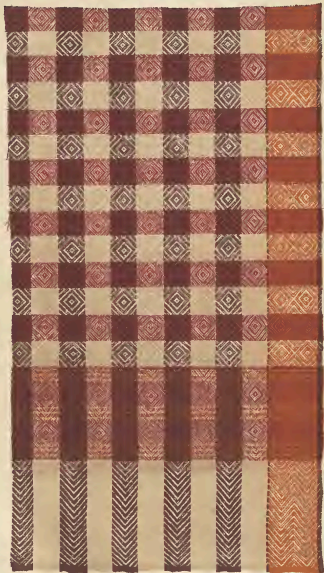
MAN'S GARMENT.

Length, 3 Yds 31 Ins.; Width, 26 Ins.; Weight, 1 lb. 12 oz. 7 gr.

TATTA, SIND.

NO 71, SECOND SERIES.

'8705'



MAN'S GARMENT.

Length, 2 Yds. 28 Ins.; Width, 24½ Ins.; Weight, 10 oz. 5 dr.

RANEEPORE, SIND.

NO. 73. SECOND SERIES

1892



MAN'S GARMENT.

Length, 4 Yds. Width, 29 Ins ; Weight, 1 lb. 5 oz 5/16

SIND.

no 74, SECOND SERIES.

"5880"



MAN'S GARMENT.

Length, 4 Yds  $4\frac{1}{2}$  Ins.; Width,  $28\frac{1}{2}$  Ins.; Weight, 1 lb. 1 oz.  $\frac{3}{4}$ .

SIND,

NO 75, SECOND SERIES

0075\*



MAN'S GARMENT.

Length 4 Yds. 2 Ins.; Width, 27 Ins.; Weight, 23 00-12 dr.

HYDERABAD, SIND.

NO 77, SECOND SERIES.

2374 \*



MAN'S GARMENT.

Length, 4 Yds., Width, 28 Ins.; Weight, 1 Lb. 2 oz. 4 dr.

HYDERABAD, SIND.

NO 78, SCODHO STRAET.

"1855"



MAN'S GARMENT.

Length, 2 Yds 34 $\frac{1}{2}$  Ins.; Width, 29 Ins.; Weight, 15 ozs. 100 Yds.

NUSRAPORE, SIND.

NO 79, SECOND SERIES

1888



MAN'S GARMENT.

Length, 3 Yds. 32 Ins ; Width, 18 Ins ; Weight, 15 oz. 4 dr.

SIND.

NO. 10, SECOND SERIES.

"2017"



MAN'S GARMENT.

Length, 1 Yd. 33 ins.; Width, 1 Yd. 18 ins.; Weight, 1 lb. 11. 00-12 dr

NAGPORE.

NO 84, SROONO SIKUS

"2284"



MAN'S GARMENT.

Length, 4 Yds. 14 $\frac{1}{2}$  Ins.; Width, 2 Yd. 5 $\frac{1}{2}$  Ins.; Weight, 1 lb.  
CHUNDEREE, CENTRAL INDIA.

NO. 86, SECOND SERIES

"5018"



MAN'S GARMENT.

Length, 3 Yds. 33 Ins.; Width, 1 Yd. 27½ Ins.; Weight, 9 oz. 8 dr.

CHUNDAREE.

NO 87, SECOND SERIES.

"6671"



MAN'S GARMENT.

Length, 4 Yds. 24 1/2 Ins.; Width, 1 Yd. 3 1/2 Ins.; Weight, 1 lb. 6 dr.

CHUNDAREE.

NO. 25, SECOND SERIES.

"5554"



MAN'S GARMENT.

Length, 4 Yds 17½ Ins; Width, 1 Yd 29 Ins; Weight, 14 oz. 6 dr.

CHUNDAREE.

NO 89, SECOND SERIES.

5578

5173



MAN'S GARMENT.

Length, 4 Yds 20 Ins.; Width, 1 Yd. 27 Ins.; Weight, 1 lb. 9 oz. 3 gr.

CHUNDAREE.

NO. 20, SECOND SERIES.

1887



MAN'S GARMENT.

Length, 4 Yds. 6 Ins. , Width, 1 Yd. 32 Ins.; Weight, 12.000 to 14 lb.

CHUNDAREE.

NO. 91, SECOND SERIES.

1873.



MAN'S GARMENT.

Length, 4 Yds 13 Ins., Width, 1 Yd 16½ Ins., Weight, 1 lb. 6 oz. 14 gr.

CHUNDAREE.

NO. 92, SECOND SERIES.

"5508"



MAN'S GARMENT.

Length 5 Yds. 16 Ins., Width 1 Yd. 8 Ins., Weight 1 lb. 10 oz. 2 dr.

BENARES.

NO 93, SECOND SERIES.

1856



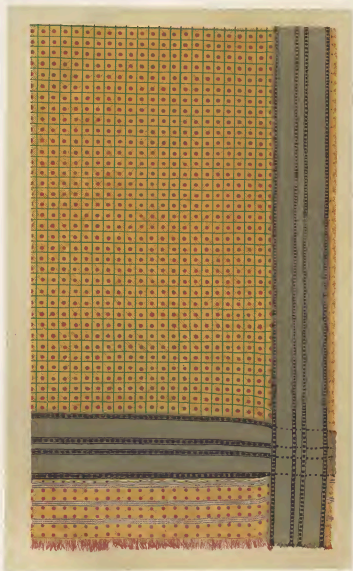
MAN'S GARMENT.

Length, 3 Yds. 15 $\frac{1}{2}$  Ins., Width, 1 Yd. 11 $\frac{1}{2}$  Ins., Weight, 3 lb. 4 oz. 14 gr.

BENARES.

NO. 94, SECOND SERIES.

"1871.



MAN'S GARMENT.

Length 3 Yds. 14 $\frac{1}{2}$  Ins., Width 1 Yd. 20 Ins., Weight 1 lb. 11 oz. 3 gr.

BENARES.

NO 96, SECOND SERIES.

"3953"



**MAN'S GARMENT.**

Length, 5 Yds. 6½ Ins.; Width, 1 Yd. 4½ Ins.; Weight, 1 lb. 9 oz.

**BENARES.**

no 97, SECOND SERIES.



MAN'S GARMENT.

Length 5 Yds 7½ Ins., Width 1 Yd 5½ Ins., Weight, 2 lbs. 5 oz 6 dr

BENARES.

NO 98, SECOND SERIES.

7287



MAN'S GARMENT.

Length, 3 Yds. 17 Ins., Width, 1 Yd. 23½ Ins., Weight, 3 Lb. 11 oz. 13 gr.

BENARES.

NO 99, SECOND MARK.

1887



MAN'S GARMENT.

Length, 3 Yds. 16 1/2 Ins., Width, 2 Yds. 26 Ins., Weight, 3 lbs. 12 dr.

BENARES.

NO. 100, SECOND SERIES.

"3251"



MAN'S GARMENT.

Length, 2 Yds. 1 In.; Width, 2 Yds. 1 1/2 In.; Weight, 2 lb. 8 oz. 4 gr.

BENARES.

NO. 100A, SECOND SERIES.

"1848"



MAN'S GARMENT.

Length, 4 Yds 33 Ins., Width, 34 Ins., Weight, 1 lb. 2 oz. 8 gr.

LOODIANA.

NO 101, SECOND SERIES.

"2003"



MAN'S GARMENT.

Length, 3 Yds. 28½ Ins. Width, 29½ Ins. Weight, 12 oz. 7½

GOODASPORE.

NO 108, SECOND SERIES.  
"2135"



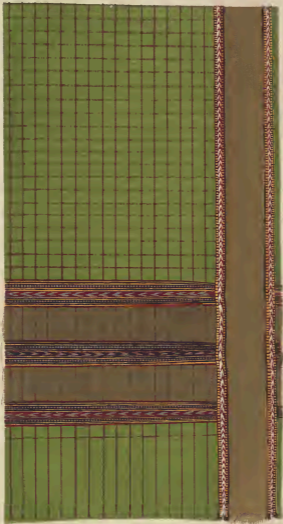
MAN'S GARMENT.

Length, 3 Yds 20 $\frac{1}{2}$  Ins., Width, 27 $\frac{1}{2}$  Ins.; Weight, 20 oz. 3 lb.

JHELUM.

NO 104, SECOVED SERIES.

1949



MAN'S GARMENT.

Length, 3 Yds. 23 Ins., Width, 27½ Ins., Weight, 10 OZ. 17 1/2 D.

UMRITSUR.

NO 108, SECOND SERIES.

"7231"



MAN'S GARMENT.

Length, 3 Yds., Width, 27 1/2 Ins., Weight 9 or 10 lb.

PUNJAB.

NO 110, SECOND SERIES.

"3551"



MAN'S GARMENT.

Length, 4 Yds 5 Ins., Width, 22½ Ins., Weight, 1 lb. 2 1/2 oz.

PUNJAB.

NO 111, SECOND SERIES.

"2505"



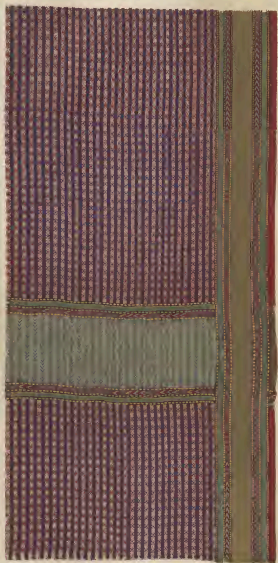
MAN'S GARMENT.

Length, 3 Yds. 14 Ins., Width, 1 Yd. 20 Ins., Weight, 2 lb. 14 oz. 10 in.

PUNJAB.

NO. 112, SECOND SERIES.

• 2224 •



MAN'S GARMENT.

Length, 4 Yds. 7 Ins. Width, 25 Ins. Weight, 12 1/2 Oz. 2 Gr.

BHAWULPORE.

NO 113, SECOND SERIES

1873



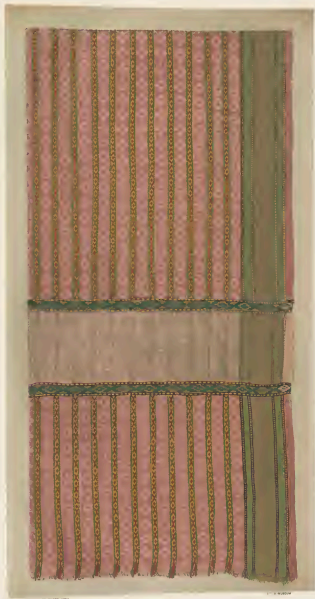
MAN'S GARMENT.

Length, 4 Yds 10 Ins.; Width, 27 Ins.; Weight, 12 oz. 3/4

BHAWULPORE.

NO 114, SECOND SERIES.

• 0110 •



MAN'S GARMENT.

Length, 4 Yds 3½ ins., Width, 27½ ins., Weight, 13 oz 7 dr

BHAWULPORE.

NO 115, SECOND SERIES

1878



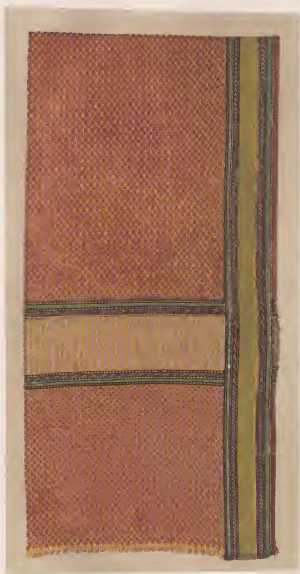
MAN'S GARMENT.

Length, 4 Yds. 5½ Ins.; Width, 27 Ins.; Weight, 9 oz.

BHAWULPORE.

NO 116, SECOND SERIES

10007



MAN'S GARMENT.

Length, 4 Yds 8 Ins.; Width, 26½ Ins.; Weight, 21 oz. 25 gr.

BHAWULPORE.

NO 117, SECOND SERIES.

1867.



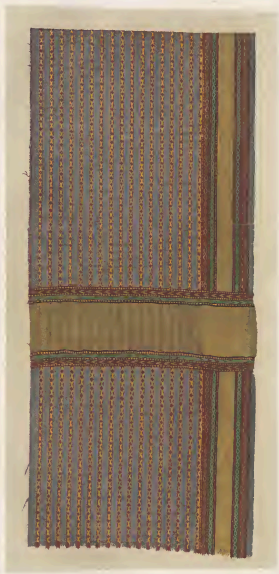
MAN'S GARMENT.

Length, 3 Yds 15 Ins.; Width, 26½ Ins.; Weight, 1000z. (2 1/2 lb.)

BHAWULPORE.

NO 116, SECOND SERIES.

5264"



MAN'S GARMENT.

Length, 4 Yds. 11 $\frac{1}{2}$  Ins.; Width, 28 Ins.; Weight, 12 oz. 15 $\frac{1}{2}$  gr.

BHAWULPORE.

NO 119, SECOND SERIES

1877-



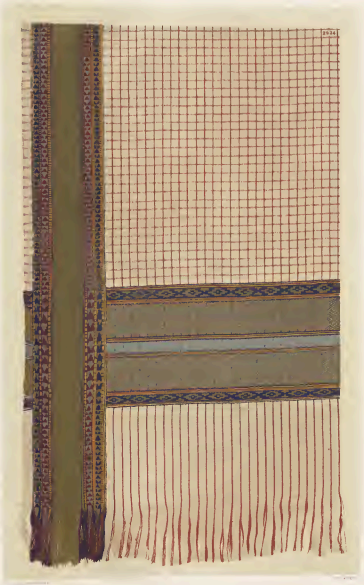
MAN'S GARMENT.

Length, 3 Yds. 2 1/2 Ins. Width, 35 Ins. Weight, 13 1/2 Oz.

LAHORE.

NO. 120, SECOND SERIES

' 1885'



MAN'S GARMENT.

Length, 3 Yds. 31 Ins.; Width, 1 Yd. 10 1/2 Ins.; Weight, 1 Lb. 13 OZ. 4 Gr.

LAHORE.

NO. 121 SECOND SERIES.

5334 \*



MAN'S GARMENT.

Length, 3 Yds. 30] Ins. . Width, 31 Ins. . Weight 1 lb. 4 oz. 5/8

MOOLTAN.

NO. 122, SECOND SERIES

"2244"

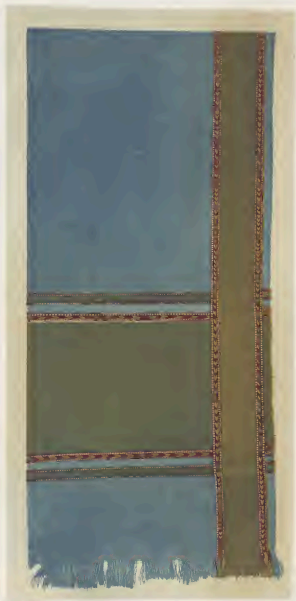


MAN'S GARMENT.

Length, 3 Yds. 29 Ins., Width, 30 Ins., Weight, 2 3/4 oz. 2 ct.

MOOLTAN.

NO 123, SECOND SECTION.  
"2341"



MAN'S GARMENT.

Length, 3 Yds. 28 Ins.; Width, 30½ Ins.; Weight, 1 lb. 2 oz. 4 gr.

MOOLTAN.

NO 125, SECOND SERIES

"3108"



MAN'S GARMENT.

Length, 3 Yds 13½ Ins., Width, 30½ Ins.; Weight, 1 lb. 1 oz. 10 gr.

MOOLTAN.

NO 126, SECOND SERIES

1880



MAN'S GARMENT.

Length, 2 Yds. 27 Ins.; Width, 1 Yd. 6½ Ins.; Weight, 1 lb. 15 oz. 14 gr.

CACHAR.

NO 129, SECOND SERIES.

"5576"



MAN'S GARMENT.

Length,  $\pm$  Yd. 2½ Ins.; Width,  $\pm$  Yd. 25½ Ins.; Weight,  $\pm$  Lb. 11 oz.

CACHAR.

NO. 130, SECOND SERIES

"5014"



MAN'S GARMENT.

Length, 4 Yds. 3½ Ins. Width, 16 Ins.; Weight, 15 or 8 lb.

ARRACAN.

NO 131, SECOND SERIES.

"8888"



MAN'S GARMENT.

Length, 2 Yds 30 $\frac{1}{2}$  Ins.; Width, 1 Yd. 12 Ins.; Weight, 2 lb. 3 $\frac{1}{2}$  oz. 1 dr.

SYLHET.

NO 132, SECOND SERIES

"350"



MAN'S GARMENT.

Length, 2 Yds. 16 $\frac{1}{2}$  Ins., Width, 1 Yd. 4 Ins. Weight, 11 OZ.

SIAM.

NO. 133, SECOND SERIES

1894



MAN'S GARMENT.

Length, 2 Yds. 3 1/2 In. ; Width, 1 Yd. Weight, 14 oz. 4 1/2

PALEMBANG.

NO 134, SECOND SERIES.

' 2227'



EMBROIDERED CHAIR COVER.  
DELHI.

No. 386.



PHOTO-LITH BY W. H. BROWN

W. H. BROWN, DELHI

**EMBROIDERED SCARF.**  
 WHITE SILK ON BLACK NET.

Length . . . . . 3 Yards.  
 Width . . . . . 33 Inches.  
 Weight . . . . . 62 oz.  
 Price (1855) .. Rs. 9.

DELHI.

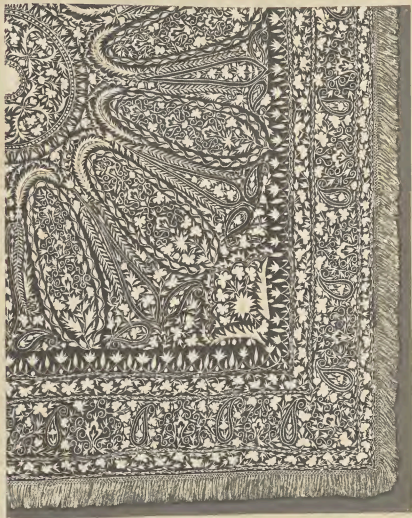


PHOTO LITH BY WEBER

INDIA MUSEUM

DELHI EMBROIDERED SHAWL  
WHITE SILK ON BLACK NET



EMBROIDERED CANOPY.

КУТОМ.

No 988



MAT.  
PALGHAT, MADRAS.

NO. 380, SECOND SERIES

"1926" D\*



MAT.  
PALGHAT, MADRAS.

NO 300, SECOND SERIES

"1921 A"



M A T.  
PALGHAT, MADRAS.

no. 391, SECOND SERIES

\* 1272: 8\*



M A T.  
PĀLGHĀT, MADRAS.

no. 392, SECOND SERIES.

"18721 G"



M A T.  
PALGHAT, MADRAS.

NO 393, SECOND SERIES.

"1873 C."



MAT.  
PALGHAT, MADRAS.

NO 304, SECOND SERIES.

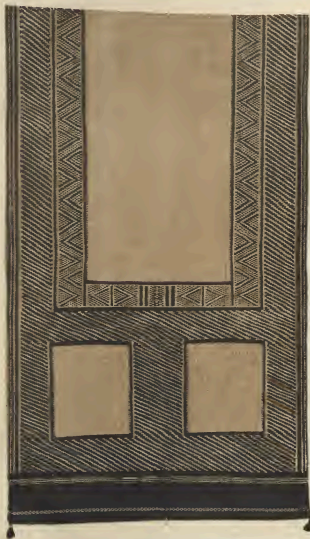
112751 P"



M A T.  
PALGHAT, MADRAS.

NO 398, SECOND SERIES

"1891 G"



M A T.  
PALGHAT, MADRAS.

NO 326, SECOND SERIES

"1271 H"



M A T.  
PALGHAT, MADRAS.

NO 397, SECOND SERIES  
\* 12791, 1 \*



MAT.  
PALGHAT, MADRAS.

NO 398, SECOND SERIES.

"12921"



M A T.  
MADRAS.

NO 289, SECOND SERIES

"12724"



MAT.  
JESSORE.

NO 400, SECONO SERIES

"12720"